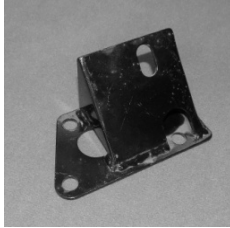


SM 001 A RH

Front engine mounting E-Type
C15850



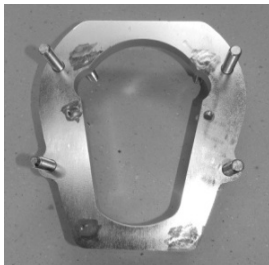
SM 001 B LH

Front engine mounting E-Type
C15849



SM 002 LH/RH

Engine mounting rear
C14922/3



SM 003

Distance plate GETRAG



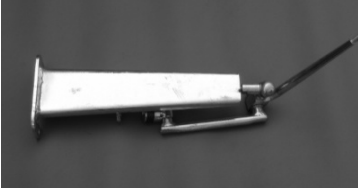
SM 004

Distance plate for Leyland



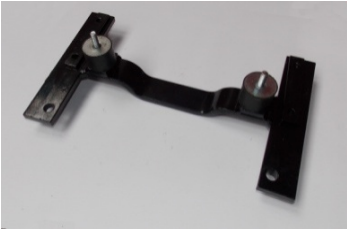
SM 005

Gear shift for GETRAG E-Type



SM 006

Gear shift GETRAG XK



SM 007 A

Gearbox lower bracket E-Type 6v



SM 007 B

Gearbox lower bracket E-Type 2+2



SM 007 C

Gearbox lower bracket E-Type V-12



SM 007 D

Gearbox lower bracket Mk II



SM 008 A

Speedo drive for GETRAG



SM 008 B

Speedo drive for GETRAG/Opel



SM 009 A

Jockey pulley alloy, single
C18733



SM 009 B

Jockey pulley alloy, double
C19521



SM 010

Cznksshaf locking plate
C4810

SLAVIK JAGSPARES s.r.o, PROSTĚJOV



renovace vozů Jaguar, XK & E-Type, prodej náhradních dílů na anglické vozy
www.sk-jagspares.eu tel: 603543963, 603576392



SM 011A

Oil filter conversion XK-120



SM 011B

Oil filter conversion XK-140



SM 011C

Oil filter conversion XK-150



SM 011D

Oil filter conversion E-Type



SM 012

Lower, alloy pulley, XK



SM 013A

Lower alloy pulley E-Type 3,8



SM 013B

Lower alloy pulley E-Type 4,2



SM 014 A

Throttle linkage E-Type 4,2 LHD



SM 014 B

Throttle linkage E-Type 4,2 RHD



SM 015

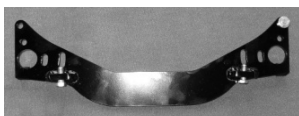
Throttle pedal E-Type

C18467



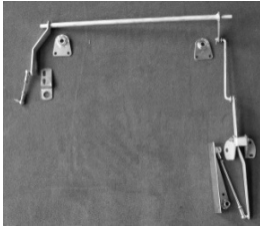
SM 016

Hydraulic clutch mechanism



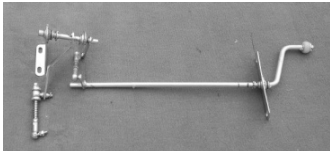
SM 017

Adjustable torsion bar brackett



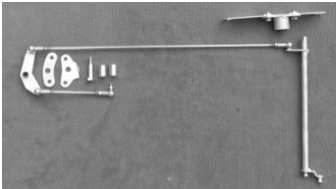
SM 018

Thorttlle linkage XK-150 early



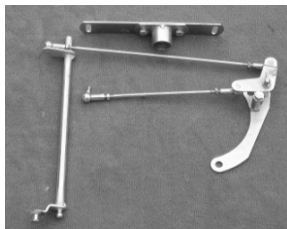
SM 019

Thorttlle linkage XK-150 late



SM 020

Throttle linkage E-Type 3,8 LHD



SM 021

Throttle linkage E-Type 3,8 RHD



SM 022

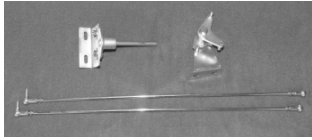
Link assembly

C18478



SM 023

Gearknob



SM 024

Throttle linkage XK-120 LHD



SM 025

Throttle pedal XK-120 LHD

C6784



SM 025A

Throttle pedal XK-150 LHD Early



SM 025B

Throttle pedal XK-150 LHD Late



SM 026

Front Engine Mounting Bracket RH
XK-140/150

C8783



SM 027

Front Engine Mounting Bracket LH
XK-140/150

C8784



SM 028

Rear Engine mounting Bracket RH
XK-140

C4467



SM 029

Rear Engine mounting Bracket LH

XK-140

C4468



SM 030

Rear Engine mounting Bracket RH

XK-150

C12948



SM 031

Rear Engine mounting Bracket LH

XK-150

C12949



SM 032

Clutch Housing Support Bracket RH

XK/E-Type

C19207



SM 033

Clutch Housing Support Bracket LH

XK/E-Type

C19206